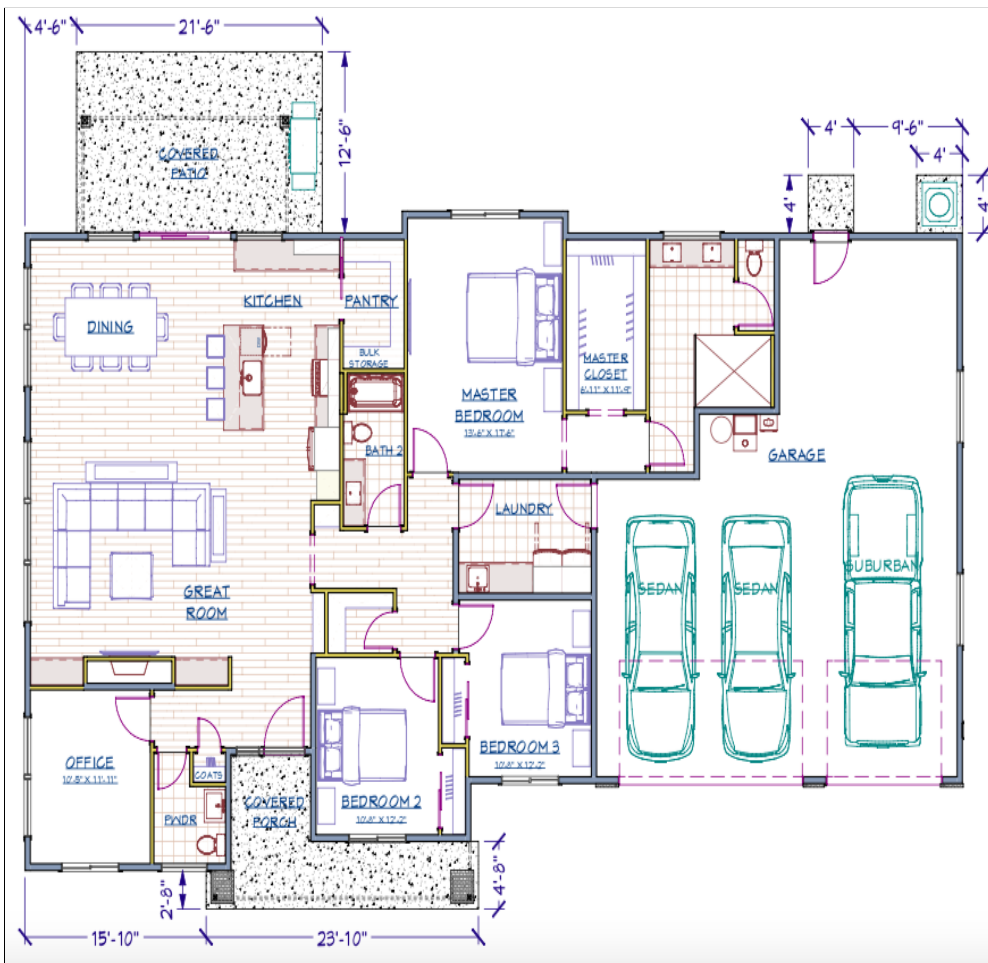


# The 2360 Plan



This stunning 2360 sqft. home is ideal for a large family or for entertainers!

Located at the base of the Horse Heaven Hills and just minutes from shopping, dining, wineries, & Historic Downtown Prosser!

- 3 Bedrooms
- 2 & ½ Bath
- Separate office space or can be used as 4th bedroom
- Full Master Bed & Bath with large walk in closet
- Spacious Dining and Family Rooms
- Walk in Pantry
- Covered Front Porch & Back Patio
- Big Windows / Lot's of Natural Light
- Gas Fireplace
- 3 Car Garage

**AVAILABLE NOW!**

## RED BLEND VILLAS

Prosser, Washington's 55+ Active Lifestyle Community

Contact Kirk Catt | Realtor | Broker | [kirk@cbt-tc.com](mailto:kirk@cbt-tc.com) | 509.521.5626



WINE COUNTRY  
COMMUNITIES